



# HCDF HDF

## Fire resistant axial fans

### Construction Characteristics

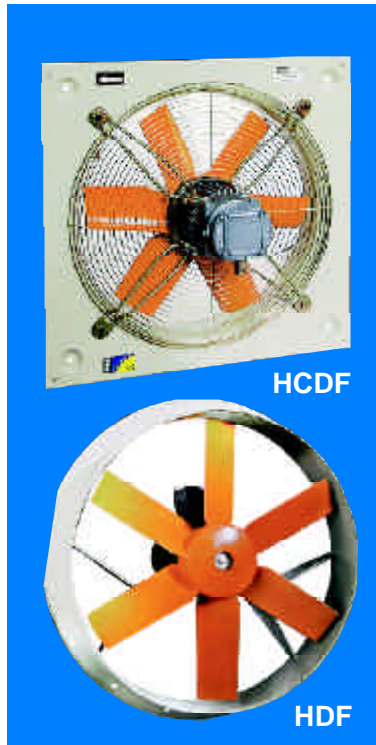
#### HCDF

- Aluminium sheet frame (to avoid sparks).

#### HDF

- Sheet steel housing with internal aluminium ring (to avoid sparks).

- Cast aluminium impeller (to avoid sparks).
- 230/400 V 50Hz (EEx-d) II BT4 motor in compliance with standard EN 50014 and EN 50018, officially ATEX approved. IP-55 protection and class F insulation.
- Corrosion-proof finish in polyester resin, polymerised at 180°C, after degreasing, phosphating and passivation pre-treatment.
- Stuffing-box included.
- On request supplied with:  
Mark  $\llcorner$   $\text{Ex}$  II 2 D EEx d.  
Tubular execution (HDF)



Mark  $\llcorner$   $\text{Ex}$  II 2 G EEx d.

NOTIFIED ORGANISATION: L.O.M.

IDENTIFICATION N°: 0163

### Technical characteristics

Model	Velocity (r/min)	Max. admissible current (A)		Installed power (kW)	Max. airflow (m3/h)	Sound level pressure dB(A)	Approx. weight Kg.
		230V	400V				
HCDF-25-4T	1370	0,78	0,45	0,09	890	51	6,5
HCDF-25-4M	1410	0,72		0,06	890	51	6,5
HCDF-30-4T	1370	0,78	0,45	0,09	1700	54	7,5
HCDF-30-4M	1410	0,72		0,06	1700	54	7,5
HCDF-35-4T	1370	0,78	0,45	0,09	2950	58	8,5
HCDF-35-4M	1410	0,72		0,06	2950	58	8,5
HCDF-40-4T	1420	1,30	0,75	0,25	4400	63	12,5
HCDF-40-4M	1400	3,25		0,25	4400	63	15,0
HCDF-45-4T	1420	1,30	0,75	0,25	6450	66	14,5
HCDF-45-4M	1400	3,25		0,25	6450	66	17,0
HCDF-45-6T	925	0,95	0,55	0,12	5200	57	14,5
HCDF-50-4T	1390	1,73	1,00	0,37	8600	69	16,5
HCDF-50-6T	920	1,56	0,90	0,18	6300	59	16,0
HCDF-56-4T	1390	3,08	1,78	0,55	10500	72	36,5
HCDF-56-6T	910	1,59	0,92	0,25	8400	63	30,5
HCDF-63-4T	1390	4,87	2,81	1,10	15100	76	44,0
HCDF-63-6T	905	2,28	1,32	0,37	12400	64	37,0
HDF-71-4T	1400	5,20	3,00	1,10	20000	79	50
HDF-71-6T	900	3,29	1,90	0,55	13800	67	31
HDF-80-4T	1400	13,86	8,00	3,00	34100	83	84
HDF-80-6T	910	5,89	3,40	1,10	20200	72	67
HDF-90-4T	1400	15,42	8,90	4,00	48200	89	103
HDF-90-6T	920	7,45	4,30	1,50	30000	77	73



# HCDF HDF

## Acoustic characteristics

The values shown are calculated using free-field sound pressure levels in dB (A), at a distance equivalent to twice the fan span plus the impeller diameter, with a minimum of 1.5 m.

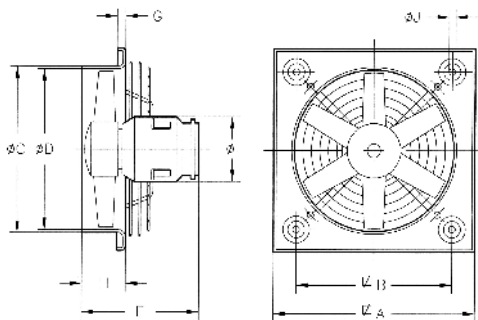
Sound power spectrum Lw(A) in dB(A) by frequency band in Hz.

Model	63	125	250	500	1000	2000	4000	8000	Model	63	125	250	500	1000	2000	4000	8000
25	22	37	56	55	56	55	50	41	56-6	37	51	70	70	71	69	65	56
31	25	40	59	58	59	58	53	44	63-4	52	66	85	85	86	84	80	71
35	29	44	63	62	63	62	57	48	63-6	40	54	73	73	74	72	68	59
40	34	49	68	67	68	67	62	53	71-4	56	76	84	89	91	88	81	70
45-4	37	52	71	70	71	70	65	56	71-6	44	64	72	77	79	76	69	58
45-6	28	43	62	61	62	61	56	47	80-4	60	80	88	93	95	92	85	74
50-4	43	57	76	76	77	75	71	62	80-6	49	69	77	82	84	81	74	63
50-6	33	47	66	66	67	65	61	52	90-4	67	88	95	100	103	99	92	81
56-4	46	60	79	79	80	78	74	65	90-6	55	76	83	88	91	87	80	69

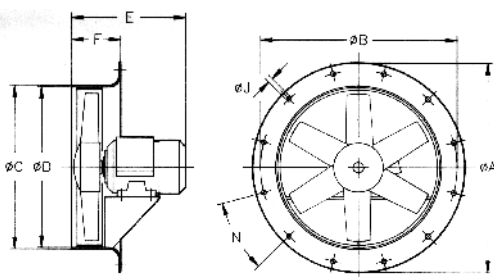


HCDF HDF

## Dimensions mm



Model	ØA	ØB	ØC	ØD	E	G	H	ØI	ØJ
HCDF-25-4T	330	275	262	260	228	11	41	132	8,5
HCDF-25-4M	330	275	262	260	235	11	41	132	8,5
HCDF-31-4T	400	336	310,5	308	234	11	50	132	10,5
HCDF-31-4M	400	336	310,5	308	241	11	50	132	10,5
HCDF-35-4T	465	390	362,5	360	245	11	50	132	10,5
HCDF-35-4M	465	390	362,5	360	252	11	50	132	10,5
HCDF-40-4T	532	452	412,5	410	265	11	70	132	10,5
HCDF-40-4M	532	452	412,5	410	295	11	70	132	10,5
HCDF-45-4T	596	504	462,5	460	262	11	70	132	10,5
HCDF-45-4M	596	504	462,5	460	290	11	70	132	10,5
HCDF-45-6T	596	504	462,5	460	262	11	70	132	10,5
HCDF-50-4T	665	562	516,5	514	262	11	70	162	10,5
HCDF-50-6T	665	562	516,5	514	262	11	70	132	10,5
HCDF-56-4T	710	630	563	560	370	15	105	162	10,5
HCDF-56-6T	710	630	563	560	370	15	105	162	10,5
HCDF-63-4T	800	710	638	635	401	15	102	190	10,5
HCDF-63-6T	800	710	638	635	372	15	102	162	10,5



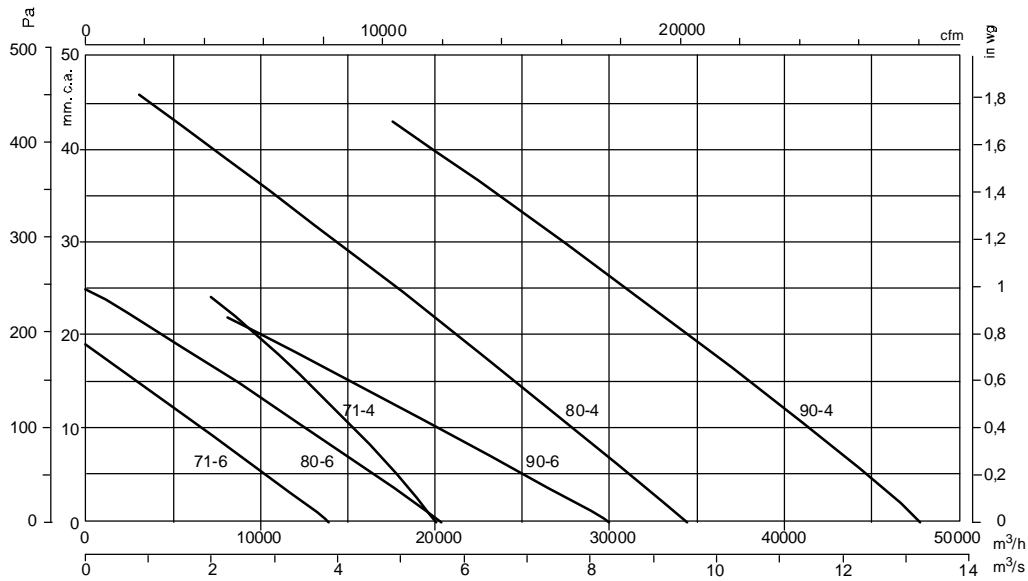
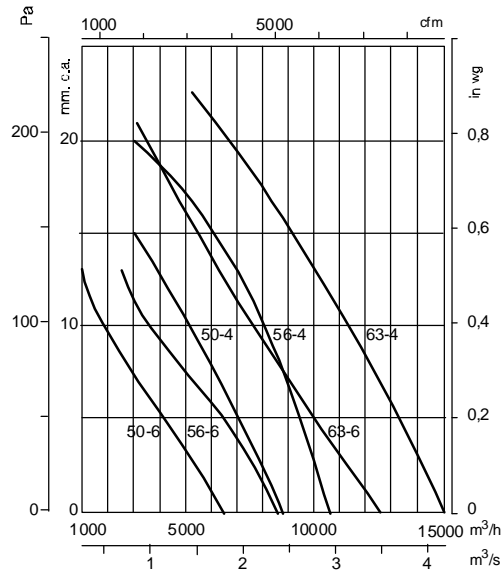
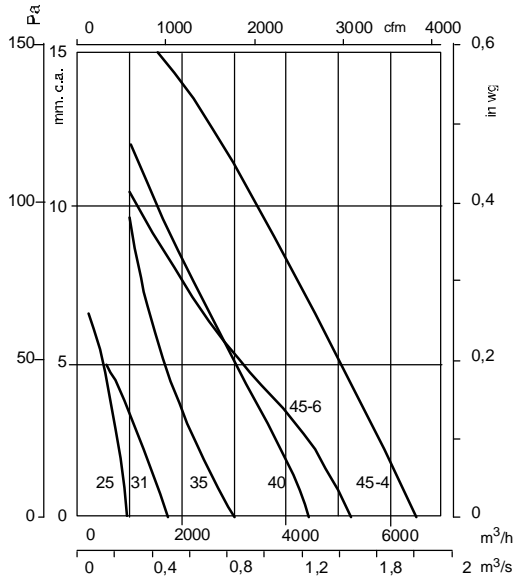
Model	ØA	ØB	ØC	D	E	F	ØJ	N
HDF-71-4T	810	770	715	710	349	150	12	16 x 22° 30'
HDF-71-6T	810	770	715	710	323	150	12	16 x 22° 30'
HDF-80-4T	900	860	805	800	421	180	12	16 x 22° 30'
HDF-80-6T	900	860	805	800	371	180	12	16 x 22° 30'
HDF-90-4T	1015	970	906	900	457	180	15	16 x 22° 30'
HDF-90-6T	1015	970	906	900	415	180	15	16 x 22° 30'



# HCDF HDF

## Characteristics Curves

Q = Airflow in m<sup>3</sup>/h. and m<sup>3</sup>/s.  
 Pe = Static pressure in mm.c.a. and Pa.

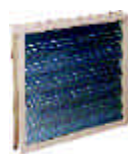


## Accessories

See pages 248 onwards.



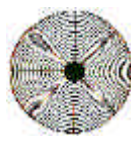
INT



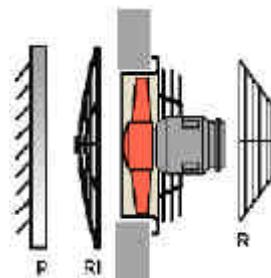
P



R

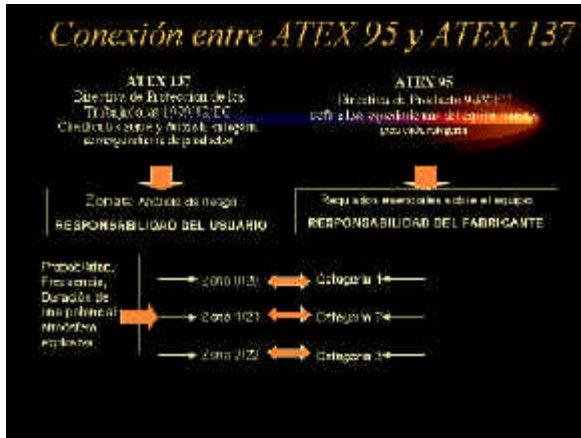


RI





# ATEX directives (Explosive atmospheres)



HCDF HDF



SODECA fan certificate (ATEX/Ex II 2 G)

Example motor mark:

